

LED BY SOPHIE BROWN PHOTOGRAPHY

KARONGWE HIDE & SEEK

PHOTOGRAPHIC
EXPERIENCE

9TH - 15TH JULY 2021

OPPORTUNITIES FOR
MORE THAN JUST
THE BIG FIVED

MORE THAN JUST
GAME DRIVES!

GET A DIFFERENT
PERSPECTIVE BY
PHOTOGRAPHING
WILDLIFE FROM A
SPECIALISED
WATER-LEVEL HIDE

PHOTOGRAPHIC GUIDANCE
AND TUITION THROUGHOUT

PRICE INCLUDES
ACCOMMODATION, ALL
GAME VIEWING ACTIVITIES
MEALS, ALL DRINKS
AIRPORT TRANSFERS
AND ALL CONSERVATION FEES

ONLY
£2500
EMAIL US AT
INFO@RAW-PHOTOGRAPHIC.COM

RAW
PHOTOGRAPHIC



ABOUT THIS PHOTOGRAPHIC EXPERIENCE

Photograph from a new perspective with this photographic experience with a unique twist! Spend time in two of only a handful of water-level hides throughout the entirety of Africa in addition to traditional game drives, gaining not only practical photographic knowledge and also developing your photographic skill set. Focus not only on the large mammals of Africa but learn to photograph the smaller mammals and bird life often overlooked on a traditional safari.

Whether you're an amateur or professional, this experience is open to anyone and everyone with a passion or interest in wildlife and nature photography. When not out on your twice daily game activities, there will be time to delve into optional further photographic and post-processing tuition, set within a comfortable and supportive teaching environment.

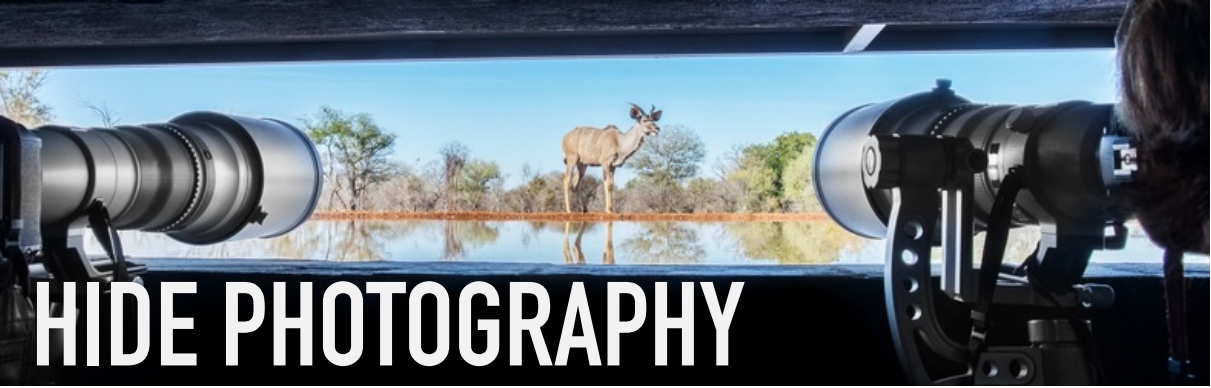
Led by a team of professionals in their field; from your passionate photographic lead to skilled field guide and attentive lodge staff, we cannot wait to share the magic of the African wilderness with you on this unique photographic experience.

FOR ANY AND ALL ENQUIRIES PLEASE CONTACT US AT

INFO@RAW-PHOTOGRAPHIC.COM



This photographic experience has been specifically designed by and will be conducted by Sophie Brown. Sophie has a wealth of experience and knowledge ready to share after having spent years living in South Africa where she's taught wildlife and conservation photography to international guests.



With access to two water-level hides, both facing in different directions in order to utilise the best possible lighting conditions throughout the day, the highlight of this trip is without a doubt spending time in this unique wildlife environment.

Positioned at the edge of two different watering holes, the hides leave wildlife blissfully unaware of your presence and wildlife is typically relaxed as a result, allowing for great eye-level behavioural and reflection photographs as animals drink or bathe in the water.

Individual gimbal mounts and bean bags are available in both hides to ensure that your camera is ideally positioned and steady, giving you the best opportunity to respond to the changing scene and capture the perfect shot, whether it be a wide or close-up.

Whilst visiting the hides during the drier winter months increases the chance of larger mammals and predators visiting the water holes, it does not guarantee it. However, the hides are frequented regularly by smaller mammals and a huge variety of bird life, giving the maximum chance to walk away with a varied and stunning portfolio of imagery. Spending time with species often bi-passed or overlooked on traditional game drives provides for a special and unusual perspective of South Africa and its wildlife, giving a unique insight into the diversity it has to offer.



Please note: there are no toilet facilities at the hides so please keep this in mind when consuming fluids beforehand.



ABOUT YOUR LOCATION

Located just an hour outside of Hoedspruit and overlooking the Drakensburg mountain range in the province of Limpopo, the Karongwe Private Game Reserve in the Greater Kruger is a richly diverse 9000ha reserve straddling four rivers, providing exceptional habitats for an extensive variety of wildlife and bird life.

In addition to hosting all of the Big Five species of Africa (Lion, Elephant, Rhino, Buffalo and Leopard) in a free roaming environment, the reserve is home to an abundance of general game species and extraordinary bird life which you can expect to encounter on your twice daily bush experiences.

Situated on the banks of the Kuvjenamei river, lies your home away from home, accommodating a maximum of 20 guests in a selection of spacious and comfortable villas. The villas are hidden under towering Jackalberry trees, with the magnificent northern escarpment of the Drakensberg mountains as a backdrop.

Meals are privately served around the campfire in each group's private boma, which is ideal for families or small groups of like-minded people, who prefer their privacy.

When not out on game drives with experienced guides and trackers or spending time at the water-level hides in all of Africa, feel free to make the most of the lodge's private pools and outside seating areas during downtime and relish in the tranquil setting of the Karongwe Private Game Reserve.





YOUR ITINERARY

DAY 1 JULY 9TH

- **12:00** Meet outside Hoedspruit airport and be greeted by your transfer driver who will take you to the lodge.
- **14:00** Arrive at your lodge, where you will meet your photographic lead host (Sophie), your field guide and the rest of the lodge staff. Make yourself at home, freshen up and enjoy a cold drink whilst we discuss the upcoming week.
- **15:30** Afternoon game drive with welcoming sundowners.
- **18:00** Return to lodge for pre-drinks, followed by dinner.

DAY 2-6 JULY 10TH – 14TH

- **05:30** Early morning wake up.
- **06:00** Head out for a morning game drive or travel to the hide.
- **09:30** Return to lodge for breakfast, followed by some down time.
- **12:00** Workshop
- **14:00** Lunch
- **15:30** Head out for afternoon game drive or more time in the hide.
- **18:00** Return to lodge for pre-drinks, followed by dinner.

DAY 7 JULY 15TH

- **05:30** Early morning wake up.
- **06:00** Head out for final game drive.
- **09:00** Return to lodge for breakfast.
- **10:00** Depart lodge for airport.

*Please note this itinerary is an example of what to expect, final times and durations may be subject to change.



WHAT TO BRING

GENERAL

When it comes to clothing, toiletries and accessories, pack carefully and only what you need. Why pack that hairdryer when you could pack more camera gear or leave space for curios and mementos to take home?

Sunblock, sunglasses, hats and closed-toe shoes are all essential items for protection against the elements. This trip is taking place during the country's winter, and as such mornings and evenings can get cold. Please make sure to bring some warmer clothes such as coats, scarfs and gloves. Clothing should preferably be neutral in colour.

MALARIA

The Karongwe region is a **low risk** malaria area. It is best to consult your local Doctor for advice. Generally, the type of medication needed for the Kruger area is Malarone, Doxycycline or Melfloquine. Mosquitos are more prevalent in the wet, warmer season and not so active during winter.

PHOTOGRAPHY

Whilst this workshop is open to anyone with any kind of photographic equipment (from smartphones to professional gear) – we do advise bringing out a minimum amount of kit to ensure you get the best out of your time.

- A DSLR or mirrorless camera with:-
 - A wide angle lens
 - A zoom lens (70-300 or longer)
 - Tripod
 - Extra batteries and spare memory cards
 - Battery charger and power adaptor
(for South Africa outlets)
- Laptop with Adobe Lightroom Classic installed.
- External hard drive is recommended, but not essential.



WHAT'S INCLUDED

INCLUDED

- Road transfer from Hoedspruit (/Eastgate) airport to lodge and return transfer back to airport
- All meals
- All drinks (coffee, tea, soft drinks, local alcohol)
- All game drives and photographic activities
- Photographic guidance and tuition throughout
- Midday photographic presentations and support
- Wi-fi
- Pool Access
- All conservation fees and levies

NOT INCLUDED

- International and internal flights
- Travel insurance
- Premium alcohol
- Curios and mementos
- Items of a personal nature
- Tips and gratuities for lodge / camp staff (cash)
- Loaning or renting of camera equipment or computer / laptop



TRAVELLING IN 2021

BOOKING TERMS AND CONDITIONS

Naturally, there are a lot of concerns regarding travel given the recent Covid-19 pandemic and subsequent travel bans and restrictions.

We want to assure all our guests that our trips are designed to look after them. Safety is our number one priority, especially when working with wildlife, and being able to provide the high standard of experience whilst adhering to strict safety protocols is something that we and our partnering lodges and reserves strictly adhere to.

As such, there will be limits to the amount of guests that can be on any vehicle or inhabiting any lodge at a time. Face masks and hand sanitizing will more than likely be the norm for quite a while, but we're confident that, despite these regulations, we will be able to offer memorable and life changing experiences and photographic opportunities to guests as early as June 2021.

Our terms and conditions for all trips have been updated to incorporate and cover any issues, complications and restrictions that have arisen due to the Covid-19 pandemic. This is done for the wellbeing and safety of all our guests, hosts and partners – to again, further ensure that safety is our number one priority for everyone. Our full terms and conditions are sent as a separate PDF document to guests upon enquiry.

As always, if there's any questions or concerns related to travel and our trips, please do not hesitate and we will answer quickly and honestly.

In order to fully book a trip, please contact us via our email address (info@raw-photographic.com), or on our website via the *Enquire Now* button on our *Photo Safari* page or through our booking form on the *Contact Us* page.

We will get in touch and supply you with our Terms & Conditions and a Registration Form, which must be filled in, signed and returned to us before we can finalize your booking. This includes details such as medical and dietary requirements, so information must be accurate and honest.

A 40% non-refundable deposit is due within 14 days of booking. This payment must be done via bank transfer.

At this point, your booking is held up until 8 weeks before departure of your safari, by which time you need to have paid the remaining amount. If payment has not been made at this time, RAW Photographic reserves the right to cancel your booking to open the space for another potential guest.

Once final payment has been made, we will confirm your position on our safari and communicate further details of the trip as the need arises. Other than that, it's a case of waiting and we look forward to seeing you in Africa!

The full list of our Terms and Conditions will be sent to you upon enquiry of booking. It's important that the terms and conditions are read, as by signing the Registration Form you confirm that you've read and agreed to all that's listed.



FREQUENTLY ASKED QUESTIONS

Is this trip right for me?

This trip is great for anyone with a love for photography, but we do cater specifically for amateurs and those wanting to learn. Spending extended periods of time in hides and utilizing hide photography is integral to this trip. This is a fantastic experience but may not suit everyone. If you're still unsure, get in touch and we can talk more in depth about what would make a safari great for you.

Is it safe to travel?

We specifically targeted mid-2021 to start running trips to allow as much time as possible for the world to recover from the effects of Covid-19. There are protocols put in place throughout your entire trip, in line with government and official demands, to ensure that safety for everyone involved is the utmost priority. As things change over time, we will adapt and update our protocols and the information we give to our guests. Once again, if you're still unsure, please get in touch so we can more in depth.

How much is my deposit?

Your deposit is 40% of the inclusive cost of your trip, as advertised. So for this trip, running at £2,500 per person, the deposit would be £1,000 per person. This will need to be paid within 14 days of booking and is non-refundable unless the trip is cancelled from our end.

What payment method do you accept?

Currently we can only accept payment as a bank transfer to a UK bank account.

Should I bring a laptop? And do I need editing software?

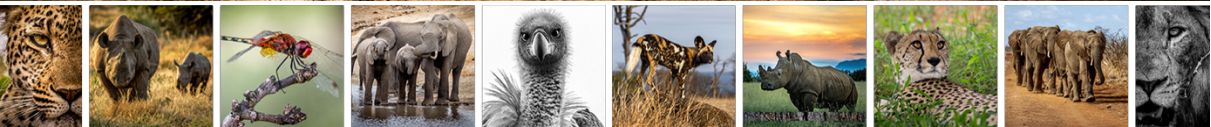
A laptop with editing software is ideal for this trip, as we do cover cataloging and editing photographs as part of the workshop. We recommend you download and install **Adobe Lightroom Classic**, as that's the specific software we will be using, but we can accommodate those without a laptop or editing program. However, it's still recommended to ensure you get the most out of your trip.

Can a non-photographer join this trip? Will they enjoy it?

Even though we run specialized photographic safaris, we also accommodate those with no knowledge or interest in photography. We believe in putting experience above all else, so any non-photographers will still have a great experience.

How much should I tip?

Tipping / gratuities is not included in the cost, as it needs to be cash in order to be equally split amongst the lodge staff that look after you during your stay. Whilst there's no set number for a tip, we recommend a minimum of R1000 per person. This money will be given to the lodge manager at the end of your stay, to be distributed afterwards.



WE LOOK FORWARD TO MEETING YOU!
THE RAW PHOTOGRAPHIC TEAM

