

INCLUDES:

**5x NIGHTS ACCOMODATION
IN AN ECO FRIENDLY LODGE
ALL MEALS, TEA & COFFEE
ALL GAME DRIVES
PHOTOGRAPHIC TUITION
LOCAL AIRPORT TRANSFERS**

**INTIMATE GROUP SIZE,
LIMIT OF SIX**

LED BY SOPHIE BROWN PHOTOGRAPHY

TIMBAVATI

BUDGET PHOTOGRAPHIC SAFARI

JUNE 8th - 13th

**ONLY
£ 2200**





ABOUT THIS PHOTOGRAPHIC SAFARI

This budget conscious safari offers everything you could want in a photographic safari and African bush experience, whilst also keeping things a bit more rustic and intimate for an affordable yet authentic and incredible experience.

This photographic safari offers two game drives per day in open 4x4 vehicles—one early morning and one late afternoon/early evening. Every step of the way you'll be guided by your photographic lead (Sophie Brown) and a professional field guide, who will endeavour to track the big mammals in the bush, inform you of the insect and plant life and point out some of the 350 bird species in the area. Also be on the lookout for crocodiles and hippo at dams. If you're fortunate, you may even see wild dog. In addition to Big-Five animals, the location has an array of nocturnal creatures such as bush babies, civets, genets, African wild cat and porcupines.

In between game drives, Sophie will be hosting optional photographic seminars and presentations, information which you can then take with you on the next game drive to practice. Alternatively, you can take the time to relax and recharge batteries at the pool and bar!

FOR ANY AND ALL ENQUIRIES PLEASE CONTACT US AT

INFO@RAW-PHOTOGRAPHIC.COM



This photographic experience has been specifically designed by and will be conducted by Sophie Brown. Sophie has a wealth of experience and knowledge ready to share after having spent years living in South Africa where she's taught wildlife and conservation photography to international guests.



Your camp is situated within the Timbavati Private Nature Reserve, part of the Greater Kruger National Park, in the southern part of the reserve (traversing area of 6500ha). The camp is built along a dry riverbed with a small watering hole just above.

The safari style tents are situated under thatch structures and are made up for twin accommodation, catering for 2x persons per room. Enjoy your morning coffee on your wooden deck or freshen up in your semi open ensuite bathroom (shower, W.C. and hand-basin).

Safari activities are conducted by professional, knowledgeable and fully qualified guides. The camp can accommodate a maximum of 16 guests in total, where you will be treated with our warm South African hospitality, a relaxed atmosphere to enjoy and soak up the true African wilderness. The camp's layout encompasses an open-plan lounge, dining room (breakfast and lunch served here) bar area overlooking a dry river bed and a small watering hole where animals flock for a drink of water during the hot summer days. They also have a small swimming pool where you can enjoy your book or just stare out into the bush.

We know how important our planet is, therefore we are proud to say that they are very much an Eco-Friendly camp, making use of solar power and gas energy! This means, that you won't find a power outlet in your tent, rather a charging station in the main area, where you can recharge your batteries for that perfect picture!

* All drinks are excluded in your accommodation rate, you can just ask any of the camp staff members to assist you with ordering a drink and we then add this to your tent number, which you can settle upon departure with either cash or credit card (visa /MATERCARD). if you opt to settle your account with your credit card, there will be a small transaction fee added to your final bill.





YOUR ITINERARY

DAY 1 JUNE 8TH

- **13:00** Meet outside Hoedspruit airport and be greeted by Sophie Brown, your photographic lead.
 - **14:30** Arrive at your lodge, where you will meet your field guide and the rest of the lodge staff. Make yourself at home, freshen up and enjoy a cold drink whilst we discuss the upcoming week.
 - **15:30** Afternoon game drive with welcoming sundowners.
 - **18:30** Return to lodge for pre-drinks, followed by dinner.
-

DAY 2-5 JUNE 9TH – 12TH

- **06:00** Early morning wake up for coffee and rusks.
 - **06:30** Head out for a morning game drive.
 - **10:00** Return to lodge for breakfast / brunch, followed by some down time.
 - **12:00** Downtime or optional photographic seminars by Sophie Brown.
 - **14:30** Lunch
 - **15:30** Head out for afternoon game drive
 - **18:30** Return to lodge for pre-drinks, followed by dinner.
-

DAY 6 JUNE 13TH

- **06:00** Early morning wake up for coffee and rusks.
- **06:30** Head out for final game drive.
- **10:00** Return to lodge for breakfast.
- **11:00** Check out and depart lodge for airport.

*Please note this itinerary is an example of what to expect, final times and durations may be subject to change.



WHAT TO BRING

GENERAL

Your accommodation has a laundry service, so there's no need to waste space on extra clothes when you could pack more camera gear or leave space for curios and mementos to take home.

Sunblock, sunglasses, hats and closed-toe shoes are all essential items for protection against the elements. This trip is taking place during the country's winter, and as such mornings and evenings can get cold. Please make sure to bring some warmer clothes such as coats, scarfs and gloves. Clothing should preferably be neutral in colour.

MALARIA

The Timbavati region is a **low risk** malaria area. It is best to consult your local Doctor for advice. Generally, the type of medication needed for the Kruger area is Malarone, Doxycycline or Melfloquine. Mosquitos are more prevalent in the wet, warmer season and not so active during winter.

PHOTOGRAPHY

Whilst this safari is open to anyone with any kind of photographic equipment (from smartphones to professional gear) – we do advise bringing out a minimum amount of kit to ensure you get the best out of your time.

- A DSLR or mirrorless camera with:-
 - A wide angle lens
 - A zoom lens (70-300 or longer)
 - Tripod
 - Extra batteries and spare memory cards
 - Battery charger and power adaptor
(for South Africa outlets)
- Laptop with Adobe Lightroom Classic installed.
- External hard drive is recommended, but not essential.



WHAT'S INCLUDED

PRICE INCLUDES

- Road transfer from Hoedspruit (/Eastgate) airport to lodge and return transfer back to airport
- All meals
- Tea, coffee and water
- All game drives and photographic activities
- Photographic guidance and tuition throughout
- Midday photographic seminars
- Wi-fi
- Pool Access
- All conservation fees and levies

PRICE DOES NOT INCLUDE

- International and internal flights
- Travel insurance
- Soft drinks and alcohol
- Curios and mementos
- Items of a personal nature
- Laundry Service
- Tips and gratuities for lodge / camp staff (cash)
- Loaning or renting of camera equipment or computer / laptop



TRAVELLING IN 2021

BOOKING TERMS AND CONDITIONS

Naturally, there are a lot of concerns regarding travel given the recent Covid-19 pandemic and subsequent travel bans and restrictions.

We want to assure all our guests that our trips are designed to look after them. Safety is our number one priority, especially when working with wildlife, and being able to provide the high standard of experience whilst adhering to strict safety protocols is something that we and our partnering lodges and reserves strictly adhere to.

As such, there will be limits to the amount of guests that can be on any vehicle or inhabiting any lodge at a time. Face masks and hand sanitizing will more than likely be the norm for quite a while, but we're confident that, despite these regulations, we will be able to offer memorable and life changing experiences and photographic opportunities to guests as early as June 2021.

Our terms and conditions for all trips have been updated to incorporate and cover any issues, complications and restrictions that have arisen due to the Covid-19 pandemic. This is done for the wellbeing and safety of all our guests, hosts and partners – to again, further ensure that safety is our number one priority for everyone. Our full terms and conditions are sent as a separate PDF document to guests upon enquiry.

As always, if there's any questions or concerns related to travel and our trips, please do not hesitate and we will answer quickly and honestly.

In order to fully book a trip, please contact us via our email address (info@raw-photographic.com), or on our website via the *Enquire Now* button on our *Photo Safari* page or through our booking form on the *Contact Us* page.

We will get in touch and supply you with our Terms & Conditions and a Registration Form, which must be filled in, signed and returned to us before we can finalize your booking. This includes details such as medical and dietary requirements, so information must be accurate and honest.

A 40% non-refundable deposit is due within 14 days of booking. This payment must be done via bank transfer.

At this point, your booking is held up until 8 weeks before departure of your safari, by which time you need to have paid the remaining amount. If payment has not been made at this time, RAW Photographic reserves the right to cancel your booking to open the space for another potential guest.

Once final payment has been made, we will confirm your position on our safari and communicate further details of the trip as the need arises. Other than that, it's a case of waiting and we look forward to seeing you in Africa!

The full list of our Terms and Conditions will be sent to you upon enquiry of booking. It's important that the terms and conditions are read, as by signing the Registration Form you confirm that you've read and agreed to all that's listed.



FREQUENTLY ASKED QUESTIONS

Is this trip right for me?

This trip is great for anyone with a love for photography, but we do cater specifically for amateurs and those wanting to learn. If you're still unsure, get in touch and we can talk more in depth about what would make a safari great for you.

Is it safe to travel?

We specifically targeted mid-2021 to start running trips to allow as much time as possible for the world to recover from the effects of Covid-19. There are protocols put in place throughout your entire trip, in line with government and official demands, to ensure that safety for everyone involved is the utmost priority. As things change over time, we will adapt and update our protocols and the information we give to our guests. Once again, if you're still unsure, please get in touch so we can more in depth.

How much is my deposit?

Your deposit is 40% of the inclusive cost of your trip, as advertised. So for this trip, running at £2,200 per person, the deposit would be £880 per person. This will need to be paid within 14 days of booking and is non-refundable unless the trip is cancelled from our end.

What payment method do you accept?

Currently we can only accept payment as a bank transfer to a UK bank account.

Should I bring a laptop? And do I need editing software?

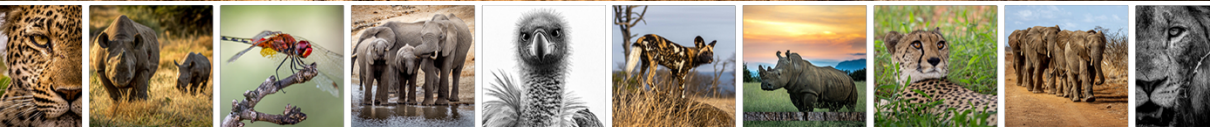
A laptop with editing software is ideal for this trip, as we do cover cataloging and editing photographs as part of the workshop. We recommend you download and install **Adobe Lightroom Classic**, as that's the specific software we will be using, but we can accommodate those without a laptop or editing program, but it's still recommended to ensure you get the most out of your trip.

Can a non-photographer join this trip? Will they enjoy it?

Even though we run specialized photographic safaris, we also accommodate those with no knowledge or interest in photography. We believe in putting experience above all else, so any non-photographers will still have a great experience.

How much should I tip?

Tipping / gratuities is not included in the cost, as it needs to be cash in order to be equally split amongst the lodge staff that look after you during your stay. Whilst there's no set number for a tip, we recommend a minimum of R1000 per person. This money will be given to the lodge manager at the end of your stay, to be distributed afterwards.



WE LOOK FORWARD TO MEETING YOU!
THE RAW PHOTOGRAPHIC TEAM

